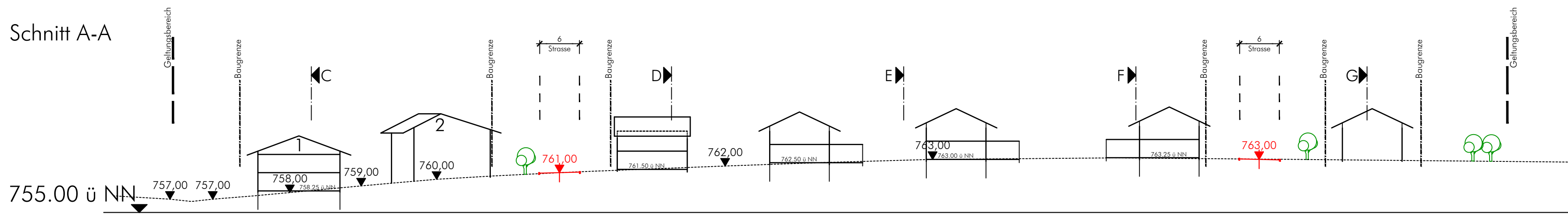
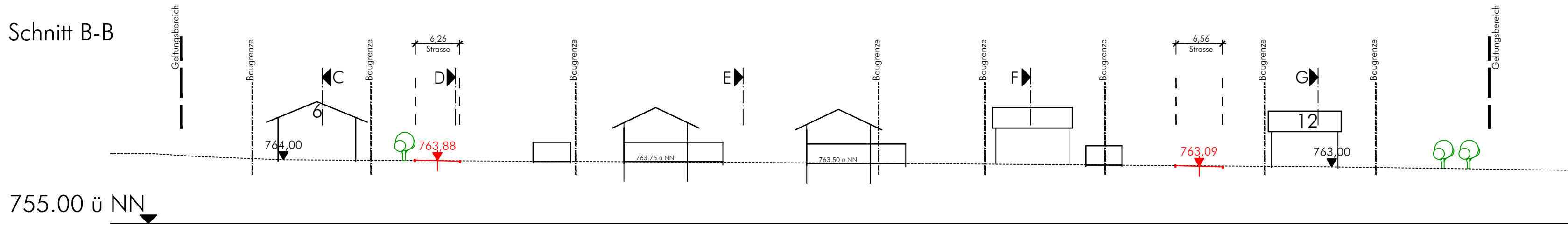


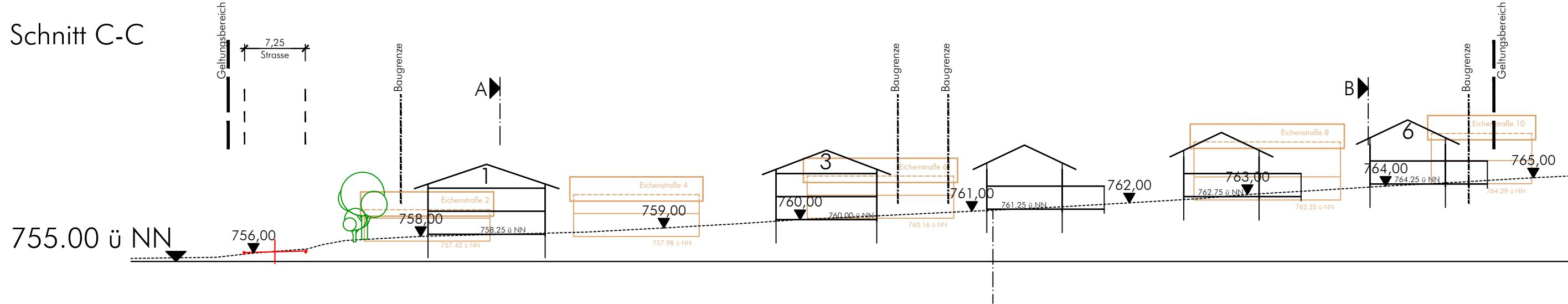
Schnitt A-A



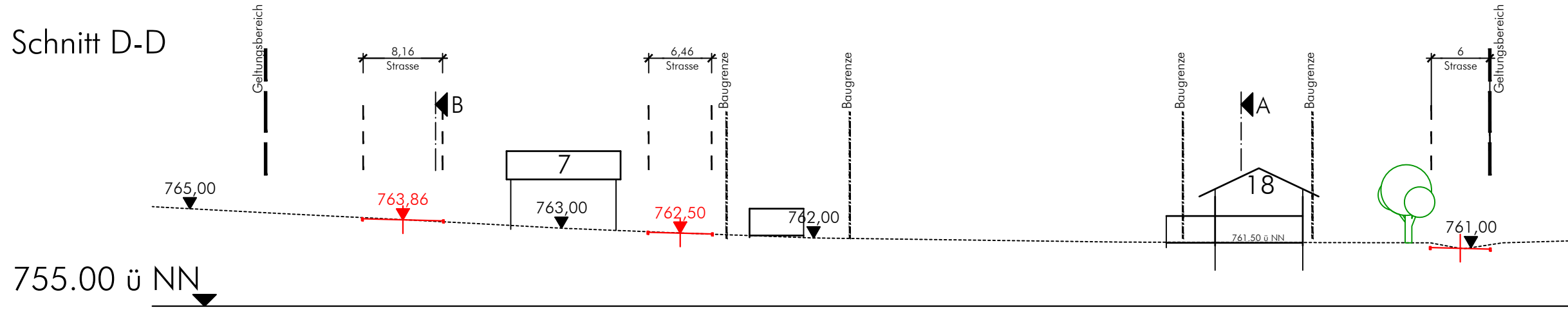
Schnitt B-B



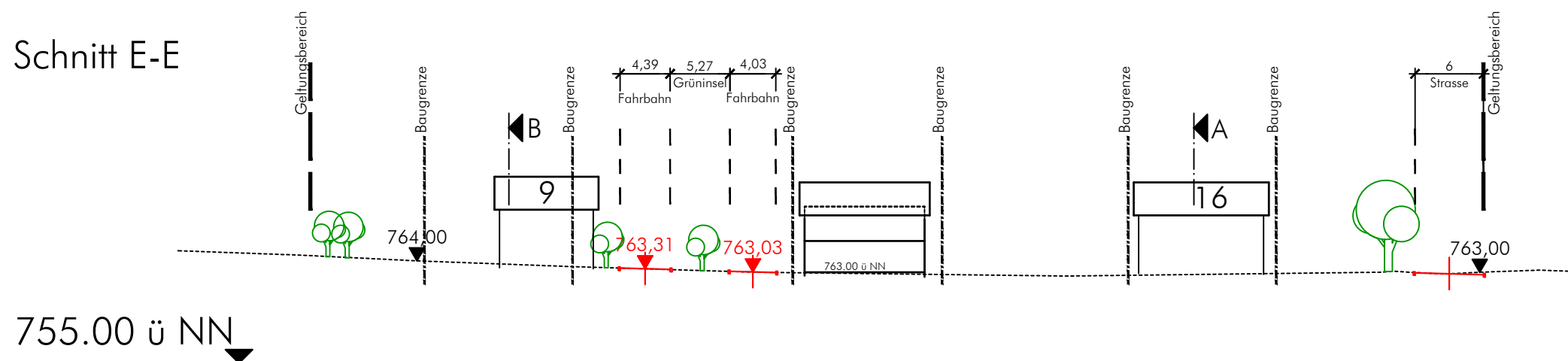
Schnitt C-C



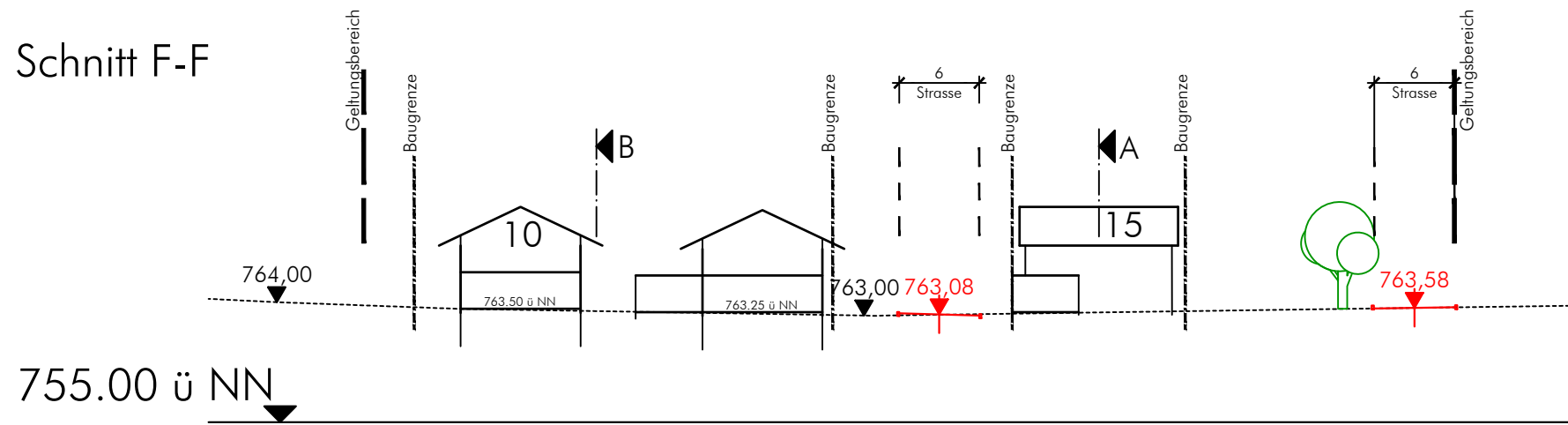
Schnitt D-D



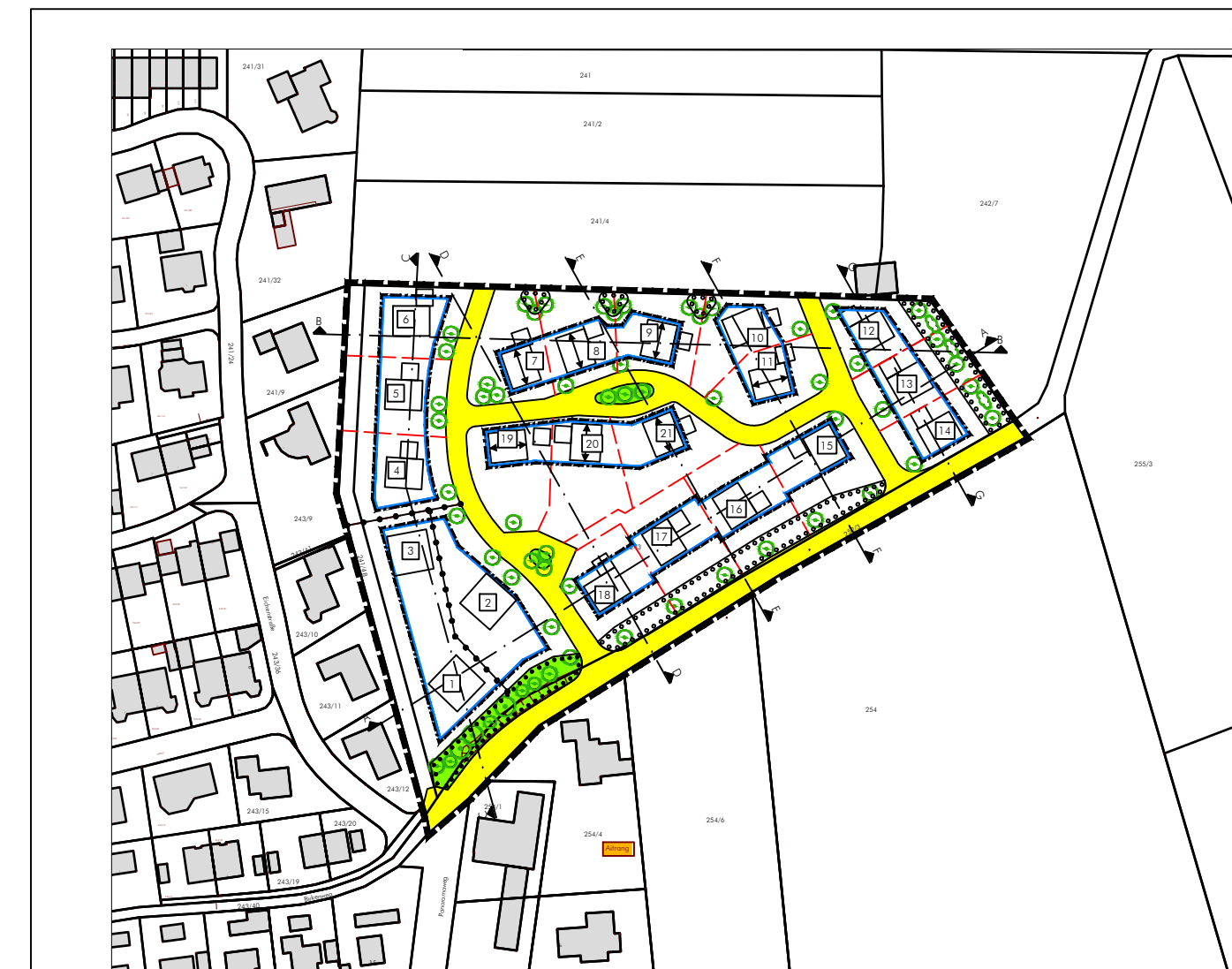
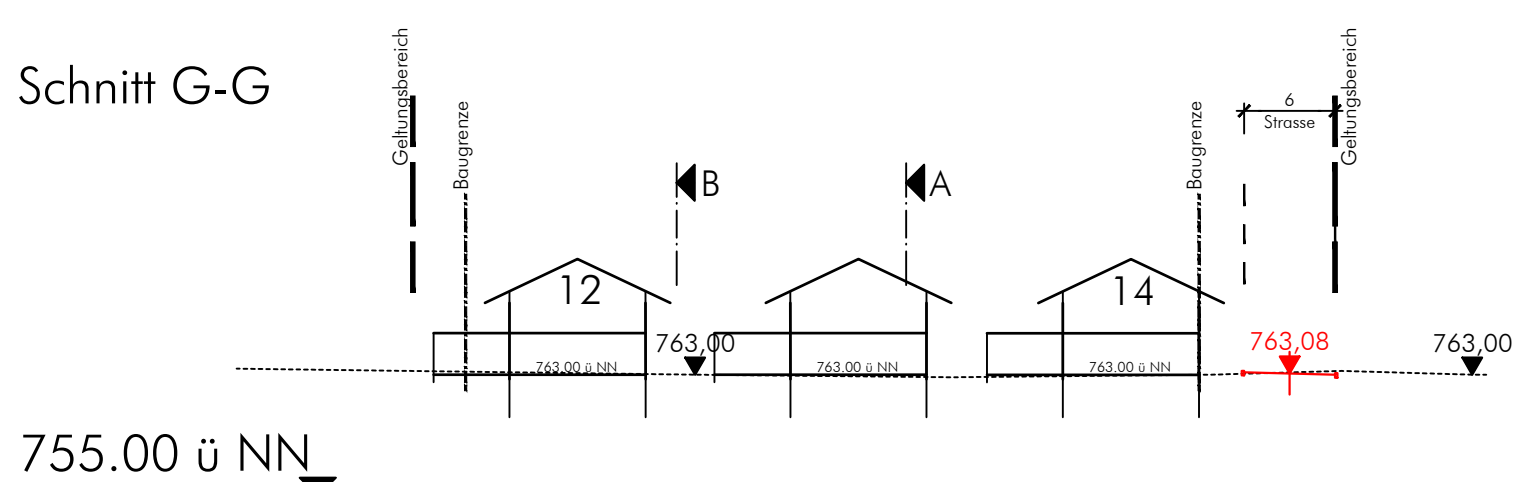
Schnitt E-E



Schnitt F-F



Schnitt G-G



Gemeinde Aitrang  
 Landkreis Ostallgäu  
 Bebauungsplan "Panoramaweg"  
 Schnittlagen A - G

**abtplan** büro für kommunale entwicklung  
 Inh. Thomas Haag, M.A. Architekt | Stadtplaner  
 Hirschzeller Straße 8  
 87600 Kaufbeuren  
 Tel. 08341.99727.0  
 Fax 08341.99727.20  
 info@abtplan.de

i.d.F. vom 14.01.2019

M 1:500

Version vom 16.01.2019